

OCHSNER hot water heat pumps

NATURAL HOT WATER



OCHSNER
HEAT PUMPS

OCHSNER hot water heat pumps

HOT WATER HEATING MORE EFFICIENT THAN EVER



The Europa Series heat pumps are the ideal supplement to any heating system for providing all your hot water needs. As well as providing hot water extremely efficiently, they can also provide other features such as cooling and exhaust ventilation of store rooms (eg. pantries).

Environmentally friendly hot water heating using air/exhaust air or ground heat as the heat source

Combinable with photovoltaic- or solar systems

Very quiet operation

ehpa-seal of quality for all models

Intelligent control technology with the simplest operation and with Touch Display

Additional functions such as cooling, drying and ventilation

Confirmed efficiency record: Highest COPs – see for yourself at www.wpz.ch



OCHSNER hot water heat pumps offer the following additional advantages

• Up to 65°C hot water

A hot water temperature up to 65°C in heat pump operation means more hot water if required. For an occasionally higher hot water demand, E-rods are factory-fitted in the tanks of the compact units.

• The only cost effective alternative to solar thermal hot water heating

Using solar heat indirectly day & night, even in bad weather

• High-class components for high reliability







Double vacuum-enamelled quality hot water storage tanks ensure a long service life of your heat pumps. Only chlorine-free, absolutely ozone-neutral and non-flammable safety refrigerants as well as high-quality compressors are used.

• Easy commissioning

Quick setup, fast installation
Plug in – switch on – ready!



Tiptronic plus control with Touch Display Intelligent control with simple operation of:

-  Hot-water regulation with switchable Hygiene - Comfort function
-  Ventilation function with integrated fan-speed regulation and timer program
-  Real time clock (timer program for hot water, hygiene and ventilation modus)
-  Heat pump operation with defrost function for deployment down to -10°C air temperature
-  Solar regulation as standard in Models Europa 323 DK and 323 DK-EW for solar thermal system (to be supplied and configured on site)
-  using the Tiptronic plus Smart Grid (SG) Function, the Europa 323 DK and Europa 323 DK-EW are already prepared for Smart Metering and therefore well equipped for the electricity network of the future



Models Europa 323 DK, 323 DK-EW and Mini IWP with SmartGrid function

Use your own-generated PV electricity as priority for hot water production, thus easing your budget and the environment by decreasing your CO₂ emissions. Additionally, you can benefit from the expected favourable rates of future power grids!

OCHSNER hot water heat pumps Europa

PRODUCT RANGE



Europa 323 DK

AIR/EXHAUST AIR HEAT PUMP WITH 300 L TANK

for hot water heating, cooling of pantries and storage rooms, cellar dehumidification and ventilation

Exclusive design, combined with future-oriented technology for efficient, round the clock hot water heating – day and night, with renewable energy in all weathers.

Compact unit Europa 323 DK:

- with 300 l storage tank
- for households with up to 5 persons
- water temperature up to 65°C in heat pump operation
- heat pump operation with de-icing function for use down to -10°C air temperature
- ready to plug in
- simple installation
- with immersion sleeve for third-party brand thermostat or sensor
- with register for external heat sources such as furnaces or solar collectors
- E-rod heating element factory fitted
- air ducts DN 150 up to 20 m possible
- 2 factory-fitted sacrificial magnesium anodes
- Legionella switching using heat pump operation
- optimum heat input
- Tiptronic plus control with Touch Display



Europa 323 DK-EW

DIRECT EXTRACTION HEAT PUMP WITH 300 L TANK

for hot water heating all-year-round, even at low outdoor temperatures - for passive and low-energy houses

Exclusive design, combined with future-oriented technology for efficient, round the clock hot water heating – day and night, with renewable energy in all weathers.

Compact unit Europa 323 DK-EW:

- with 300 l storage tank
- for households with up to 5 persons
- water temperature up to 60°C in heat pump operation
- ready to plug in
- simple installation
- with immersion sleeve for third-party brand thermostat or sensor
- with register for external heat sources such as furnaces or solar collectors
- E-rod heating element factory fitted
- With 75 m copper ground collector for use of ground heat from the garden for up to 1,700 operating hours per year
- 2 factory-fitted sacrificial magnesium anodes
- Legionella switching using heat pump operation
- optimum heat input
- Tiptronic plus control with Touch Display



Europa 250 DK /DKL

AIR/EXHAUST AIR HEAT PUMP WITH 250 L TANK

for Hot-water heating, cooling of pantries and storage rooms, cellar dehumidification and ventilation

Compact unit Europa 250 DK:

- with 250 l storage tank
- for households with up to 4 persons
- water temperature up to 65°C in heat pump operation
- ready to plug in
- simple installation
- with immersion sleeve for third-party brand thermostat or sensor
- with register for external heat sources such as furnaces or solar collectors
- E-rod heating element factory fitted
- air ducts DN 150 up to 20 m possible
- 1 factory-fitted sacrificial magnesium anodes
- Legionella switching using heat pump operation
- optimum heat input
- Tiptronic light control

Compact unit Europa 250 DKL:

- Without additional register – therefore not suitable for external heat sources such as furnaces or solar thermal energy
- 1 factory-fitted sacrificial magnesium anode standard



Europa Mini IWP/IWPL

AIR/EXHAUST AIR HEAT PUMP FOR EXTERNAL TANKS UP TO 500 L

for Hot-water heating, cooling of pantries and storage rooms, cellar dehumidification and ventilation, combination with existing pellets, solar or furnace systems

Split unit:

- for external tanks up to 500 l
- for households with up to 5 persons
- water temperature up to 60°C in heat pump operation
- ready to plug in
- simple installation
- space-saving design
- air ducts DN 150 up to 20 m possible
- internal heat exchanger
- tank charging via integrated circulation pump
- Legionella switching using heat pump operation
- also available as package solution with 300l or 500l DHW tank resp. 750l tank as Twin-solution

Split appliance IWP:

- Tiptronic plus control with Touch Display

Split appliance IWPL:

- Tiptronic light control



Europa Mini EWP

DIRECT GROUND EXPANSION HEAT PUMP FOR EXTERNAL TANKS UP TO 500 L

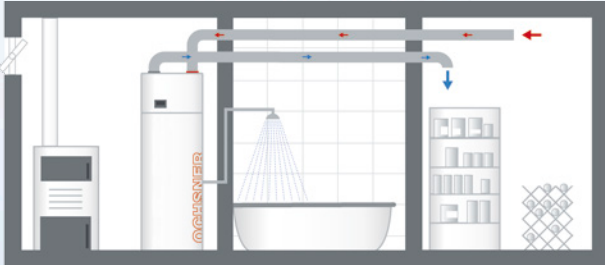
for Hot-water heating, also at low outside temperatures, auxiliary heating via buffer tank Energy supply to passive houses, combination with existing pellets, solar or furnace systems

Split unit:

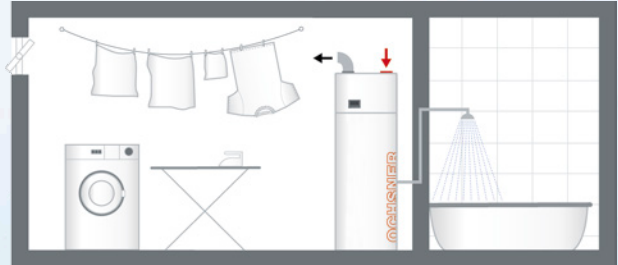
- for external tanks up to 500 l
- for households with up to 5 persons
- water temperature up to 60°C in heat pump operation
- ready to plug in
- simple installation
- space-saving design
- with 75 m copper ground collector for ground heat from the garden for up to 1,700 operating hours per annum
- internal heat exchanger
- tank charging via integrated circulation pump
- Legionella switching using heat pump operation
- Tiptronic light control
- also available as package solution with 300l or 500l DHW tank resp. 750l tank as Twin-solution

OCHSNER hot water heat pumps

INNOVATIVE TECHNOLOGY



EXAMPLE A (Europa 250 DK/DKL, 323 DK and Mini IWP)



EXAMPLE B (Europa 250 DK/DKL, 323 DK and Mini IWP)

More than just hot-water heating:
The Europa multifunctional appliances
can dry, cool and provide corresponding
ventilation.

EXAMPLE A

(Type Europa 250 DK/DKL, 323 DK and Mini IWP)

- installation in heating room
- hot-water heating from room air
- added benefit: store room or wine cellar cooling

EXAMPLE B

(Type Europa 250 DK/DKL, 323 DK and Mini IWP)

- installation in laundry room
- hot-water heating from room air
- added benefit: laundry drying in the room, decalcified water for steam irons

EXAMPLE C

(Type Europa 323 DK / living space ventilation as exhaust-air system)

- installation in utility room with heating heat pump
- heat recovery from exhaust air for hot-water heating
- added benefit: living space ventilation (hygienic single-duct system)

Extraction of stale, moist air from damp rooms (bathroom, WC, kitchen) and controlled fresh-air entry using adjustable wall-vents in living area, hallway or staircase.

Programmed to progress

OCHSNER has been manufacturing heat pumps for 37 years and has been characterized since the beginning by its environmental awareness, pioneering spirit and innovation. OCHSNER is regarded today as one of the international leaders in technology in this industry.



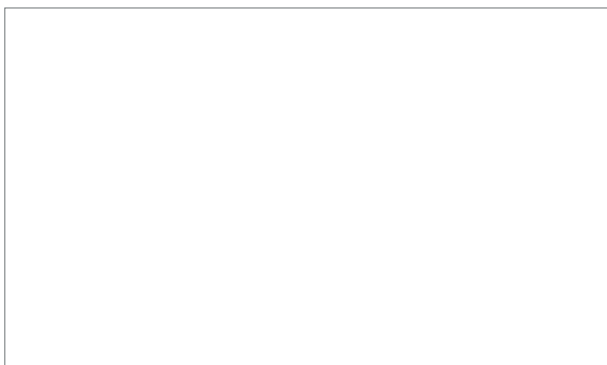
EXAMPLE C (Europa 323 DK)



HOT WATER HEAT PUMPS MULTIFUNCTION APPLIANCES/EXHAUST AIR HEAT PUMPS

SERIES	EUROPA								
	MODEL	323 DK	323 DK-EW	250 DK	250 DKL	Mini IWP	Mini IWPL	Mini EWP	
Dimensions (Dia.xH)	[mm]	DM 650 x 1850	DM 650 x 1850	DM 650 x 1610	DM 650 x 1610	DM 650 x 426	DM 650 x 426	DM 650 x 426	
Weight	[kg]	165	165	145	141	45	45	43	
Heat pump heating capacity (exhaust air)	[kW]	2,2	2,3	2,0	2,0	2,2	2,0	3,0	2,7
COP heat pump		4,4	3,5	4,1	4,1	4,3	4,0	4,1	4
Heat pump capacity at		L21/W15-55	E4/W15-55	L21/W15-55	L21/W15-55	L21/W15-55	L21/W15-55	E4/W15-55	E4/W35
Noise level	[dB(A)]	49	35	49	49	49	49	35	
Nominal voltage	[V]	230	230	230	230	230	230	230	
Operating temperature min/max	[°C]	-10/+40	-	+6/+40	+6/+40	-10/+40	+6/+40	-	
max. water temperature	[°C]	+65	+60	+65	+65	+60	+60	+60	

The performance data refer to the heat pump data measured under standard conditions (heating capacity, COP), taking the specified tolerances into consideration. The energy efficiency of the system and thus the running costs are the responsibility of the system installer. The heat pump heating systems are to be installed according to OCHSNER guidelines. No guarantee of the heat pump function can be given for systems that have not been built to these guidelines. OCHSNER therefore recommends that trained OCHSNER-System partners install the heat pump. Even if the system has been installed according to the OCHSNER guidelines, the efficiency values on site can still deviate from factory specifications, because the latter are based on standard conditions. Furthermore, user behaviour also plays a decisive role.



**OCHSNER
Wärmepumpen GmbH**

(Commercial register)
Krackowizerstraße 4
A-4020 Linz
kontakt@ochsner.at
www.ochsner.com

Head office/works

Ochsner-Straße 1
A-3350 Haag
Tel: +43 (0)5 042458
Fax: +43 (0)5 04245-349
Customer-Hotline: +43 (0)820 201000
kontakt@ochsner.at
www.ochsner.com

**OCHSNER
Wärmepumpen GmbH Germany**

D-60314 Frankfurt a. M.
Riederhofstraße 27
Customer-Hotline: +49 (0)1805 624763
kontakt@ochsner.de
www.ochsner.com

OCHSNER East

PL 30-198 Kraków, Zakłiki z Mydlnik 16
Tel: +48 (0)12 4214527
Fax: +48 (0)12 4212809
kontakt@ochsner.pl
www.ochsner.pl